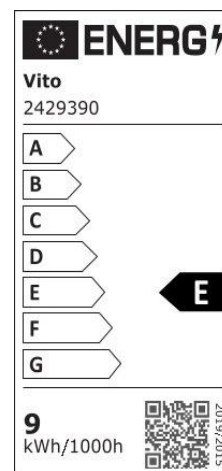
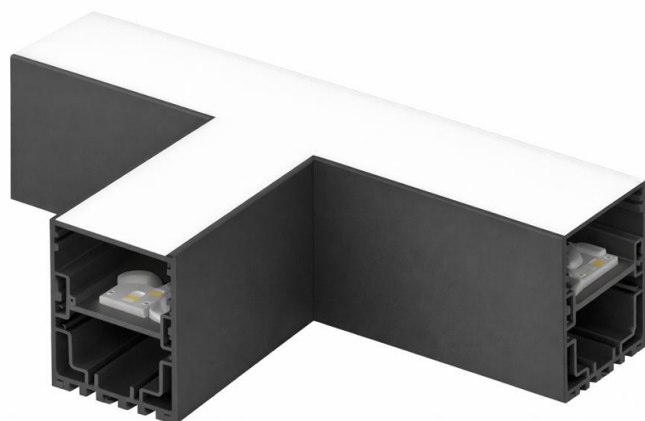


# Product Data Sheet

INDOOR LIGHTING

TETRIS 3 SL1 9W

CODE: 2429390



## Area of application

Surface-Mounted or Pendant-Mounted Linear LED lighting fixture to be installed on ceilings of corridors/rooms of homes, shopping malls, commercial areas, offices, schools, hospitals, industrial areas..

## Product Advantages

T-SHAPE CONNECTOR for PROFILED series LED LINEAR LIGHTING is with Aluminum body and Polycarbonate High Permeability Opal Diffuser with presents 945Lm lighting performance and 50000Hours long lifetime. This 9W model includes 4000K (NATURAL WHITE) LED for 120° light beam-angle as desired lighting flexibility. It's ready to be operated with its easy installation and maintenance.

VITO EUROPE  
102 Iztochna Tangenta str. 4th Floor  
P.C. 1528, Sofia/Bulgaria  
Phone: +359 2 4341575  
E-mail: info@vitoeurope.com

[www.vitolighting.com](http://www.vitolighting.com)

# Product Data Sheet

## INDOOR LIGHTING

TETRIS 3 SL1 9W

CODE: 2429390

### Product Features

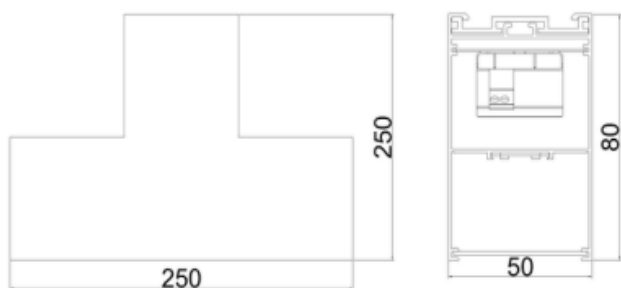
#### Electrical

Power (Watt): 9  
Voltage: 220-240V AC ~ 50/60Hz  
Power Factor: >0.9  
Electrical Protection: Class I  
Surge Protection: --  
Dimmability: NO  
Switch Cycle (Times): 30000

#### Material Characteristics

IP Class: IP20  
IK Class: -  
Material: Aluminum  
Ambient Temperature: -20°C<ta<+40°C  
Body Color: BLACK  
Product Size (mm): 50x80x250x250

#### Technical Drawing



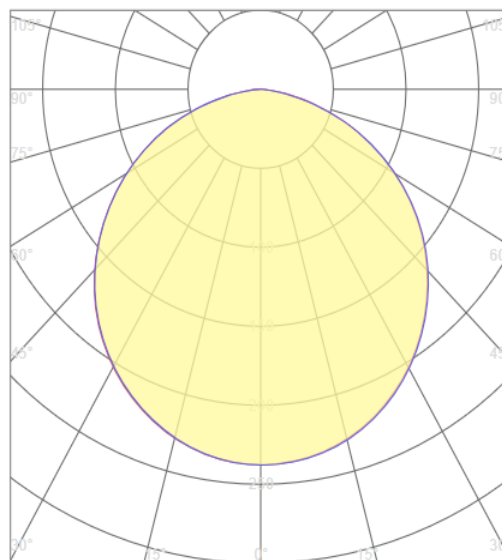
#### Lighting

Lumen (Lm): 945  
Luminaire efficacy (Lm/W): 105  
Colour Temperature: 4000K (NATURAL WHITE)  
Beam Angle: 120°  
CRI: Ra >80  
Lifetime (Hours): 50000  
EEL : E

#### Packing Informations

Pieces/Outbox: 1  
Outbox Size (mm): 95x280x290  
Outbox G.W. (Kg): 1,07  
Outbox Volume (m<sup>3</sup>): 0,0077  
Unit Weight (Gr): 1070  
Barcode : 8698553619347

#### Light Distribution Curve



System Definition: TETRIS SL-T/SUR/40K/BLC/9W/945LM/5X8X25X25CM

#### VITO EUROPE

102 Iztochna Tangenta str. 4th Floor  
P.C. 1528, Sofia/Bulgaria  
Phone: +359 2 4341575  
E-mail: [info@vitoeurope.com](mailto:info@vitoeurope.com)

[www.vitolighting.com](http://www.vitolighting.com)